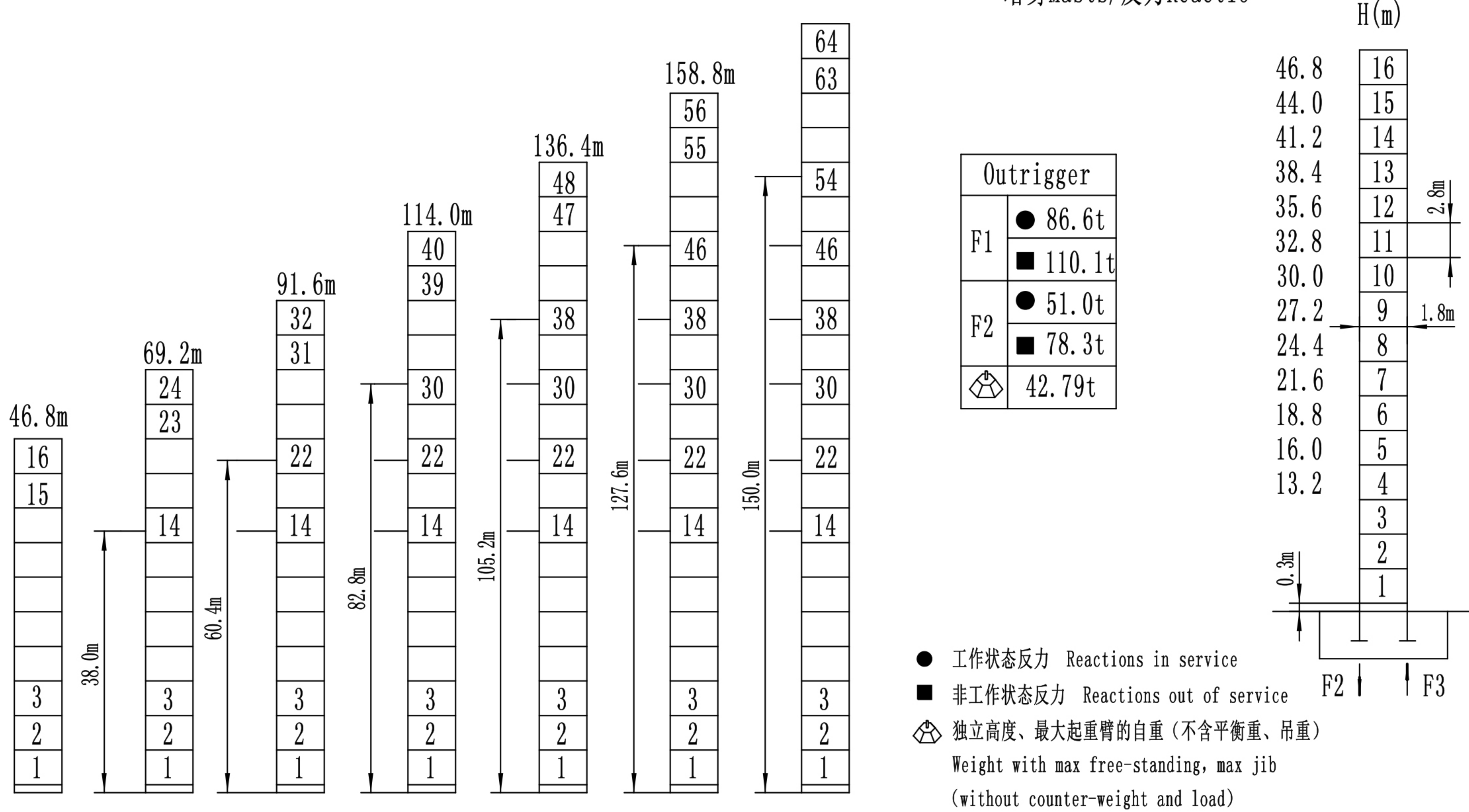


附着Anchorage

181.0m

塔身Masts/反力Reaction



起重特性Load Diagrams

R(m)		最大额定起重重量时的 最大工作幅度 Max Capacity	15	20	25	30	35	40	45	50	55	60
60m臂 (R=61.59m)	bb	3-11.99/10.0t	7.86	5.73	4.45	3.60	2.99	2.53	2.18	1.89	1.66	1.47
	b	3-23.11/5.0t	5.00		4.58	3.73	3.12	2.66	2.31	2.02	1.79	1.60
55m臂 (R=56.59m)	bb	3-12.54/10.0t	8.25	6.02	4.68	3.79	3.15	2.68	2.31	2.01	1.77	
	b	3-24.17/5.0t	5.00		4.81	3.92	3.28	2.81	2.44	2.14	1.90	
50m臂 (R=51.59m)	bb	3-13.27/10.0t	8.77	6.41	5.00	4.05	3.38	2.87	2.48	2.17		
	b	3-25.59/5.0t	5.00			4.18	3.51	3.00	2.61	2.30		
45m臂 (R=46.59m)	bb	3-14.06/10.0t	9.33	6.83	5.33	4.33	3.62	3.08	2.67			
	b	3-27.10/5.0t	5.00			4.46	3.75	3.21	2.80			
40m臂 (R=41.59m)	bb	3-14.75/10.0t	9.82	7.20	5.62	4.58	3.83	3.27				
	b	3-28.43/5.0t	5.00			4.71	3.96	3.40				

传动机构Mechanisms

配置Configuration		b		bb		kW		Diagram		
起升 Hoisting	QTJ10.80P	m/min	0~70	0~35	0~35	0~17.5	37	420m(5 layers)		
		t	2.5	5	5	10				
回转 Slewing	HP55.130.195A	r/min	0~0.6				5.5×2		▲超出咨询我们	
变幅 Trolleying	BP5565X	m/min	0~58				5.5		Consult us if overtop	
380V(±10%)50Hz		53.5kW								