



<http://www.jstengfa.cn>

江苏腾发建筑机械有限公司

JIANGSU TENGFA CONSTRUCTION MACHINERY CO., LTD. CHINA

地址：江苏省泰州市海陵工业园区

Address: HaiLing Industrial park Taizhou, Jiangsu, China

服务热线 Service Line: 0523-86083000

销售热线 Purchase Line:

传真 Fax: 0523-86083590

网址 <http://www.jstengfa.cn>

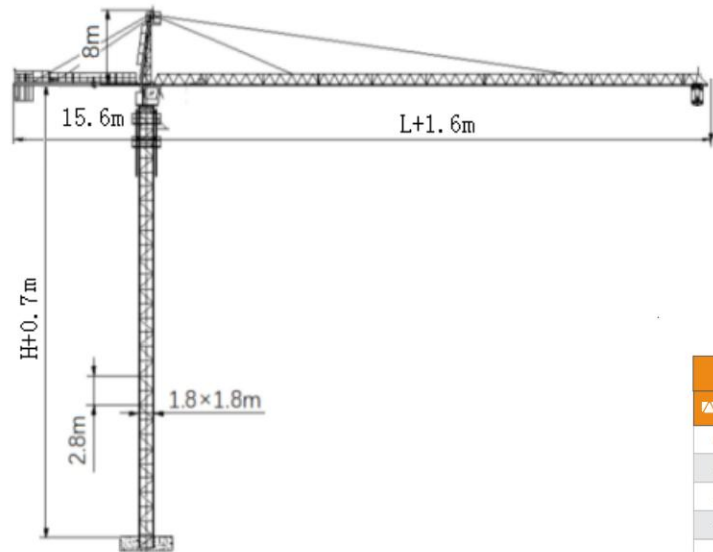
电子信箱: zfdengfa@sina.com

邮编 Code: 225300



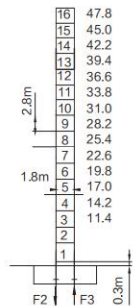
江苏腾发建筑机械有限公司

JIANGSU TENGFA CONSTRUCTION MACHINERY CO., LTD. CHINA



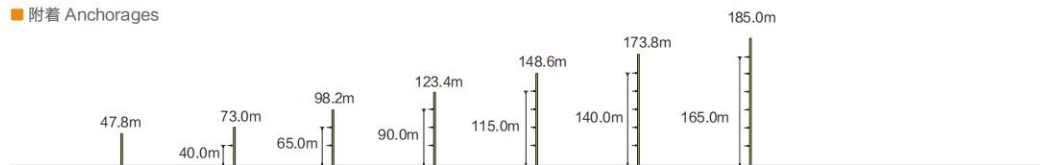
平衡重		2700 / 1500 kg		
▲▲▲	▲▲	▲ (kg)	PHZ2700	PHZ1500
60m	15.60m	16500	5	2
55m	15.60m	15000	5	1
50m	15.60m	13500	5	0
45m	15.60m	12300	4	1
40m	15.60m	10800	4	0

塔身 Masts / 反力 Reactions




- 工作状态反力 Reactions in service
- 非工作状态反力 Reactions out of service
- ⊕ 独立高度、最大起重臂的自重 (不含平衡重、吊重)
Weight with max free-standing, max jib (without counter-weight and load)
- 独立高度最大压重重量






附着 Anchorages



起重特性 Load Diagrams

		Max Capacity m/t	20	22	24	26	28	30	32	35	40	45	50	55	60	
60 (R=61.6)	⊔	3.0~29.33/5.0t	5.000						4.867	4.504	4.039	3.423	2.946	2.567	2.257	2.000
	⊔⊔	3.0~15.93/10.0t	7.671	6.857	6.183	5.617	5.134	4.717	4.354	3.889	3.273	2.796	2.417	2.107	1.850	
55 (R=56.6)	⊔	3.0~31.60/5.0t	5.000						4.926	4.424	3.759	3.244	2.834	2.500		
	⊔⊔	3.0~17.13/10.0t	8.358	7.479	6.751	6.140	5.618	5.168	4.776	4.274	3.609	3.094	2.684	2.350		
50 (R=51.6)	⊔	3.0~33.01/5.0t	5.000						4.663	3.967	3.429	3.000				
	⊔⊔	3.0~17.87/10.0t	8.784	7.864	7.104	6.464	5.918	5.448	5.038	4.513	3.817	3.279	2.850			
45 (R=46.6)	⊔	3.0~34.32/5.0t	5.000						4.735	4.010	3.450					
	⊔⊔	3.0~18.56/10.0t	9.179	8.222	7.430	6.765	6.197	5.707	5.281	4.885	4.160	3.600				

传动机构 Mechanisms

配置 Configuration			⊔		⊔⊔		kW	
 起升 Hoisting	QTJ125P	m/min	0~80	0~40	0~40	0~20	37kW	480m(6 layers)
		t	2.5	5	10	5		
 回转 Slewing	HP55.130.195	r/min	0~0.6				5.5kW×2	▲超出咨询我们 Consult us if overtop
 变幅 Trolleying	BP5565X	m/min	0~58				5.5kW	
	380V(±10%)50Hz	53.5 (kW)						